

Family Tree Maker Mac 3.1

Change Log: FTM Mac 3 (22.2.5.820) – FTM Mac 3.1 (22.2.6.950)

Overview

This document describes fixes and changes that were made in Family Tree Maker 3.1 (version 22.2.6.950) in comparison with the final version of Family Tree Maker 3 (version 22.2.5.820) released by Ancestry.

Along with critical bug fixes, and catching up the Mac edition with some missing Windows functionality, we've chosen just one area in which to add a feature, and that is security. In addition to better protection for the application itself, we have provided an option to encrypt exported tree files with a password to make sure that your family history does not fall into the wrong hands.

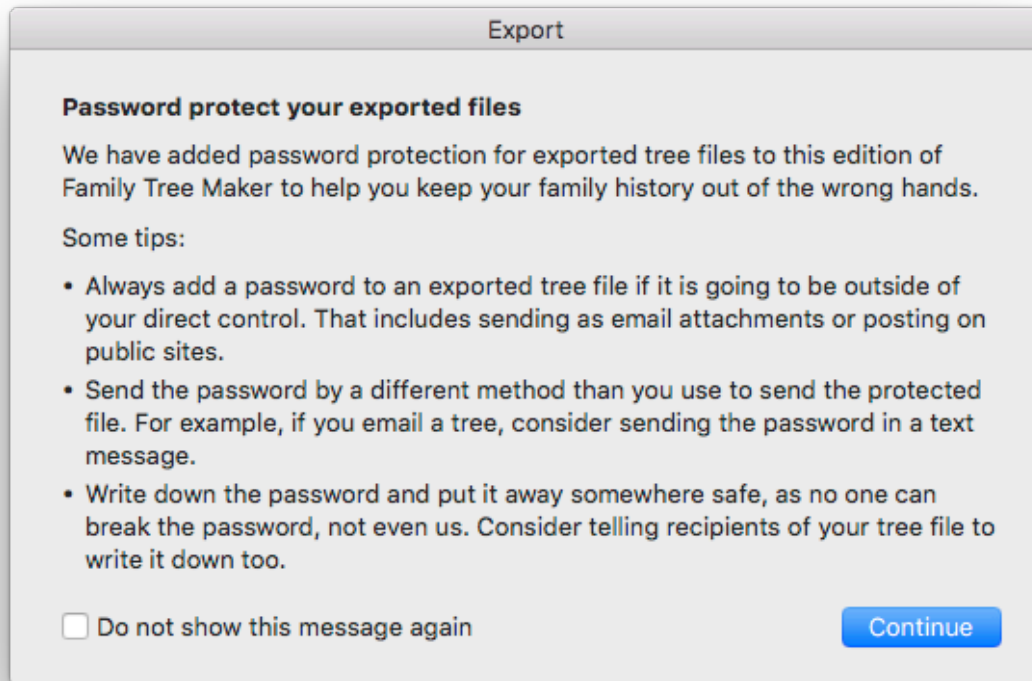
We focused primarily on improvement of stability and performance of the application. We have found and fixed more than 20 prominent crashes and freezes. Performance enhancements have been made in all areas of the application and are more noticeable with larger trees and trees with rich media collections.

Additionally we received literally thousands of bug fix requests over the past ten months and we tried to select those that were a) most frequently mentioned, b) were serious enough to warrant attention, and c) could be fixed within the current technologies and architecture of the application we inherited from Ancestry.

SECURITY

This is an area that genealogy software should be more focused on and we have started to make some immediate changes as we work towards industrial strength security in future release. We have taken two steps in this update, and it's one of the reasons this is an update that we recommend wholeheartedly for all users.

- **Encrypted Ancestry credentials.** Secure keychain storage of Ancestry name and password has been added. (MAC-154)
- **Password protection of exported trees.** As a first step to help protect every user's family history data, an option to protect trees with passwords was added to the Export dialog. This allows users to securely share their tree data with others.



STABILITY

As far as we know, we have fixed every crashing bug we could find or that's been reported to us that we could reproduce. These include:

- Fixed freeze on switching between workspaces after creating a **Smart Story**. (MAC-378)

- Fixed temporary application freezes when trying to scroll through media files on the Collection tab. (MAC-109)
- Fixed random crash while restoring backups of some trees when the restored file resumes syncing. (MAC-245)
- Fixed crash that occurred when creating a report with 30 generations or more. (MAC-8467)

SPEED

Performance was enhanced across the application within the limits of the original architecture. Nearly all users will notice some improvement, with those with very large trees noticing the difference the most.

Areas that were most improved include:

- **Opening a Tree.** Trees open in much less time when opened from the "Select tree" drop down menu, with the largest trees opening in one tenth of the time it previously took. (MAC-150)
- **Navigation.** Switching between tabs has become much faster in general, with some particular noticeable improvements being:
 - Improved responsiveness when switching to the People workspace after merging Web Search results. (MAC-63)
 - Improved responsiveness of switching between workspaces. When a tree is opened for the first time, switching to the People workspace is up to 3 times faster, to the Media workspace 6 times faster, and to the Places workspace 15 times faster. (MAC-78)
 - Responsiveness of switching to the Places workspace has been improved. (MAC-9)

- **Removing Data.** Improved performance during data removal, such as removal of a citation linked to 20 people or of a person with 100 or more media items attached. (MAC-93)
- **Sorting.** Index list sorting by Birth Date, Marriage Date are up to 20 times faster after fix of temporary freeze in this area. (MAC-3)
- **Adding Place Facts.** Fixed performance issue when adding a place to a fact in the personal information on the People workspace. (MAC-25)
- **Resolving Place Names.** Process of resolving All Places Names is now faster. (MAC-298)
- **Place name search.** Resolve Single Place Name searches and switching off the hierarchy in the Places Index are now about twice as fast. (MAC-645)
- **Places node expansion.** Performance of expansion of all nodes in the Places workspace has been improved. (MAC-345)
- **Smart Stories.** Improvements in this feature include:
 - Temporary freezes when adding Personal Biography items to a Smart Story have been fixed. (MAC-289)
 - Improved performance when selecting the "Saved Smart Stories (Media)" section in the "Add Book Item" dialog. (MAC-8206)
- **Media Linking.** Better media linking performance — media linking in the Media workspace is now about twice as fast. Linking a large set of media to a person also takes less time. (MAC-156)
- **Find missing media.** The processing of Find Missing Media is greatly accelerated, and is up to 10 times faster for very large trees. (MAC-217)
- **Media workspace.** Performance is up to 5 times faster when scrolling through media on the Media workspace. (MAC-456)

- **People workspace.** Sorting by marriage on the People workspace is remarkably improved for large trees (up to 15 times faster after fixing the freeze for this operation). (MAC-783)
- **Compacting Imported GEDCOMs.** Improved performance of compacting imported GEDCOM files. (MAC-23)
- **Restore from Backup.** Improved performance of restoring large trees from backups (up to 3 times faster) (MAC-78)

APP NAME AND ICON

- To make it easier for users to know that they have updated to the latest edition, the application icon now has the full version number in it (3.1). The application name that appears when running the product also now has 3.1 in it to make it easy to tell which edition is running. (MAC-857, 192)






FILE CONVERSION

- In the revised steps of file converting process, we convert the original in all cases when opening old tree files. This automatically preserves the link in any linked file. We also remind users of the importance of creating a backup and provide an opportunity to do so before proceeding. (MAC-1051)

USABILITY

- **Delete and Unlink Button Labels.** We have added labels to the Delete Tree and Unlink buttons in the download tree area to make their meaning clearer. This is intended to help users figure out on their own how to unlink a tree that is linked to another copy of FTM, usually the one they just upgraded from or just installed on another computer. Previously there were only "X" and "do not enter" symbols which confused many users, especially beginners. (MAC-24)

Status	Action	
Not linked to this machine	No action available	 Unlink
Not linked to this machine	<input type="button" value="Download..."/>	 Delete Tree
Linked to a tree in FTM	No action available	 Unlink

- Merge controls have been standardized: Merge Individuals, Merge Files, Web Merge, and Sync Conflict Resolution now all have a similar user interface. (MAC-56)

- Tree merging has been improved. A new merge option, which allows users to keep differences as alternates or to discard them by default, was added. The "Merging default" option is in the General tab of the Preferences dialog. "Delete differences" is the default setting of the "Merging default" option. By default, information from web searches is deleted. (MAC-313)

ART

More than a hundred new photo backgrounds from Software MacKiev's own art collections have been added to Family Tree Maker, providing users with a rich set of royalty-free images they can use in making their own charts, reports and books. An expanded collection of embellishments for users to make professional-quality documentation of their family histories is also included. (MAC-190)

GEDCOM

We are working to make it easier for users to share their Family Tree Maker trees with other users who may have a different package of software. We are doing that by making improvements and fixes in the GEDCOM import and export of this edition, making it the most standards-compliant Family Tree Maker to date as we work towards full and complete implementation of GEDCOM 5.5.1.

- Trees are now exported to GEDCOM 5.5.1 by default instead of GEDCOM 5.5 when user selects "GEDCOM" output format. *(MAC-69)*
- The **VERS** tag value displays the correct version of the GEDCOM file and is made to be limited according to the maximum length of 15 characters in the HEAD record. *(MAC-48)*
- **NAME** tag is now present in the SUBM structure. The value is taken from the User Information under the Tools menu. If User Information is not filled in, the NAME tag has a "Not Given" value. *(MAC-71)*
- Fixed representation of RECEIVING_SYSTEM_NAME (DEST). Name of app is exported to HEAD.DEST tag with the value "FTM". *(MAC-171)*
- Byte Order Mark (**BOM**) has been used as the prefix for UTF-8 encoding. *(MAC-173)*
- "Also Known As" was fixed to be handled using NAME.TYPE aka instead of the ALIA tag. *(MAC-757)*
- Names with suffixes such as Jr. or Sr. are no longer lost on import. The name is imported correctly, including the suffix. *(MAC-417)*
- Export / Import of duplicate Source citations with different media for more than one person no longer leads to the merging of those Source citations. Items are displayed separately for each person after GEDCOM export / import. *(MAC-453)*
- The ANSEL character set is now imported correctly. *(MAC-320)*

- The FILE tag in the exported GEDCOM file includes just the file name, not the entire path. (MAC-136)
- Fixed issue with the import of names from GEDCOM files. A name with symbols is duly imported instead of the <NO NAME> caption. (MAC-316)
- Fixed retention of the privacy option for media files. Private media files are now exported correctly. (MAC-7355)

CATCH-UP TO FTM WIN

The Mac and Win edition are very close, but this update closes the gap a bit more.

- Private by Default fact property option was added. The option allows facts to be made private by default. (MAC-6589, MAC-28)
- Selection of multiple facts is now possible in the Link To Source Citation dialog. (MAC-16)
- Source citations list is displayed in the Web Merge dialog in the same way as in FTM for Windows, making it possible to see which sources are used before merging data. (MAC-7451)
- Easier data sorting in the Marriage Report. The "Sort by wife" checkbox was added for data ordering. (MAC-7434)
- Source Usage data can be printed. A Print button has been added to the "Source Citation Usage" dialog. (MAC-7303)
- "This person is a parent of the children listed" checkbox was added to the pop-up for adding a spouse, providing easier child management during creation of couples. (MAC-6398)
- Photo Album Report types were added for more convenient report creation. Private media can be included. (MAC-7437)

BUG FIXES

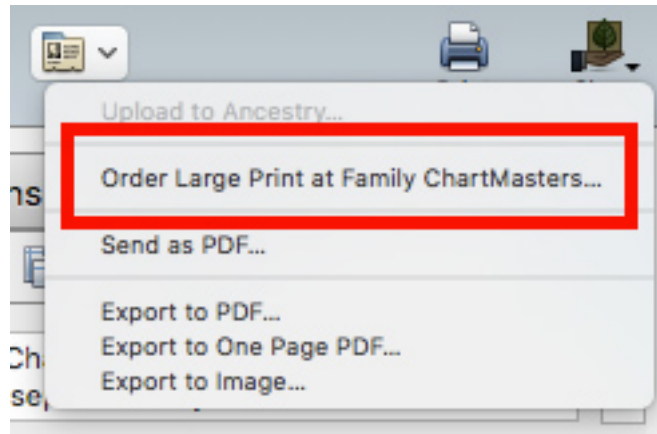
PLACES

- Place names with Unicode symbols are detected correctly within FTM. Fixed searching using Unicode symbols in the Find and Replace dialog (*MAC- 719, MAC-762*)
- Fixed merging of duplicate place names. All individuals who are linked to a place that has been replaced are displayed in the Associated People list. (*MAC-235*)
- 'N' (Northern Hemisphere) is set as the default value for the "Latitude" pop-up menu in the Location Calculator. (*MAC-927*)
- The GPS field was adjusted to accept 5 decimal places instead of 4 to match the Find A Grave GPS decimal values. (*MAC-927*)

REPORTS & CHARTS

- Report dividers are fixed. Reports are now created with the correct layout of horizontal dividers. (*MAC-460*)
- Children appear in birth order in the Family Group report. Records of children appear in birth order in the Family Group report (like they do in the People workspace) when the "Show blended families" checkbox is selected in the report settings. Before the fix, records in the report were ordered according to the date/time they were added to the tree. (*MAC-416*)
- Integration with Family ChartMasters. Family Tree Maker 3.1 has a direct link to [Family Chart Masters](#) for printing professional-quality, large format charts. (*MAC-124*)

Publish workspace > Charts > Share > Order Large Print at Family ChartMasters



- Fixed appearance of the Generate Report button in "Media Usage Report" on small displays. (MAC-7186)

SOURCES & CITATIONS

- Fixed cases where the "Sync" icon was not refreshed and "Resolve Conflicts Manually" was not opened. "Resolve Conflicts Manually" opens when the "Next" button is clicked. (MAC-375)

- Sorting of source titles. Fixed the sorting of source titles so they are listed alphabetically in the "Web Merge Wizard" dialog and in the "Source Citation Information" pane in the Sources workspace. (MAC-7507, MAC-314)

MEDIA WORKSPACE

- Lost categories of media. Fixed issue where categories of some media items were lost when reopening a tree. (MAC-745)

- Navigation with arrow keys is available for images. (MAC-7365)

- Fixed the problem of lost media files after converting a tree as a copy. All media files are displayed in the Media workspace. (MAC-979)

MISCELLANEOUS

- Sync error alerts that advised unlinking and initial download / upload of a tree were changed to provide wider range of sync troubleshooting tips including file compacting, restarting FTM and trying again later.
- Fixed the problem when some FTMM files created in FTM for Mac 1 could not be opened. (MAC-368)
- Fixed the problem where the "Merged Result" column was not displayed in Merge dialogs. (MAC-8435)
- Fixed the problem where the Home Person could not be changed in a privatized tree. (MAC-7804)
- Fixed the issue where a blank 'Resolve Conflicts' dialog was displayed for Person Notes. (MAC-7429)
- Navigation within Fact labels. Fixes were made to allow navigation using the "I" key (for individual facts) and the "S" key (for shared facts). (MAC-216)
- Incorrect linking after updating. Fixed the problem of trees being incorrectly shown as linked to the same online tree simultaneously in both FTM 3 and FTM 3.1 if both versions were retained. A tree could not be opened via FTM 3.1 if FTM 3 was also installed. (MAC-389)
- (10.8, 10.9 specific) Fixed issue that occurred when adding the "Sex" fact to the Home person during creation of a new tree. The value is now added according to entered data instead of "Male" in all cases. (MAC-765)